

PERE FAURA

NO DANCE, NO PARADISE

TECHNICAL RIDER

STAGE

- **Spatial Measurements:**

Width: 10 meters
Depth: 10 meters
Height : 6 meters or more.

Sides: 2 free meters in each side.

We need some space with two chairs and well lighting next to the left side wings for a quick costume change

The only entrance on stage for the performer is through the upper left side.

- **Dance Floor:**

- White linoleum given by the theater.

- **Black Box and Stage:**

- Black box on italian style (5 wings in each side),
- White/grey cyclorama or white back curtain, for the video-projection covering the whole back wall.
- Black borders to hide the lights, the scenography and the top of the white cyclo.

- **Set:**

SUPPLY BY THE COMPANY:

- A wooden bar with lights, to be hanged from a metal pipe of the theater.
- Several poles.

The scenography can travel by plane in two pieces of luggage: one normal suitcase and one item as a special luggage

SUPPLY BY THE THEATER:

- 1 70 cm diameter discoball with motor located in a pipe, 3 meters away from proscenium and subjected by a pipe.
- One 3 meters metal black pipe situated stage front to make a swing set for our wooden bar with lights. **It will be manipulated by a stage technician from theater.**
- Enough black rope of 8mm to hang the metal pipe.
- This pipe has set movements during the show, it starts hidden behind a border and it comes down on stage in a certain moment of the show, after this, it hides again.
- A microphone stand with telescopic boom used to wang the clothes.

LIGHTING**SUPPLY BY THE THEATER:**

7 electrified flybars inside the stage (5 for the lights, 1 for the video projector, 1 for the scenography).
1 electrified pipes stage front (for the lights)
8 sides lights structures with 2 or 3 lights in each one.
19 floor light supports
1 fog/hazer machine

- Necessary light material:

24 PC 1000W (with barndoors and frames)
14 PC 2000W (with barndoors and frames)
18 Par 64 CP62 (with barndoors)
8 Asymetrics Panorames 1000W (with frames)
7 Profiles 16° 750 – 1000W (with frames and **IRIS**)
7 Profiles 25/50° – 1000W (with frames)
1 Spotlight HMI 575W with DMX signal. **It will be operated by a lighting technician from theater.**

- Control desk:

58 digital dimmer channels (DMX 512 connection) 2 KW per channel
3 direct power sockets (1 video-projector, 1 motorized mirrorball and 1 fog machine)
2 DMX channels on stage (1 DMX shutter and 1 fog machine)
DMX signal in cabin (we control the light by computer)

In case the theater is not able to supply everything mentioned above, the company will always be willing to adapt it to the venue possibilities.

Filter list and lighting plot attached.

SOUND**SUPPLY BY THE THEATER:**

- **6-8** microphones Crown PPC-160.
- **1** microphone DPA 4088 headset beige color with wireless system. **We can bring one in case the theater cannot supply it.**
- 1 sound desk connected to the P.A. System of the theater.
- 2-4 stage monitors.
- Cables and D.I. To connect the audio from the computer.

In case the theater is not able to supply everything mentioned above, the company will always be willing to adapt it to the venue possibilities.

Sound, video and light control must be close to each other.

VIDEO

SUPPLY BY THE THEATER:

- 1 DLP Laser HD Video-projector of 10K lumens. Located on a pipe, with an optic that allows a projection that covers all the cyclo and the floor. Connected to the computer through DVI or HDMI cable.

(In case it would be impossible to cover the whole space with only one videoprojector, we can use 2. One zenital and one frontal)

- 1 DMX shutter controlled by DMX signal
(2 if there is a need for 2 video-projectors)

- 2 Video screens with HDMI or VGA input [(1) video computer, (1) light computer]

Theater must inform the company about the kind of video-projector they have. In case of not having an appropriate one, the venue and the company should negotiate the best solution.

INTERNAL COMUNICATION

Intercom system between (1) control room, (1) spotlight area and (1) stage sides .

CHANGING ROOMS

- Changing room for one person close to the stage with a table, chairs, toilet and shower with hot water and clean towels.

- Hangers and ironing machine.

- Water bottles for all the company during the whole working time. Snacks and beverages will be apreciated.

In case of more than one show the theater must try to help clean the costumes of the show.

SET-UP TIMING AND THEATER TECHNICIANS

- **DAY 1 – Minimum 1 light technician, 1 sound technician and 1 stage technician provided by the venue.**

Set-up (without any company technician) - 5 hours

Black box, white cyclo and white linoleum set-up
Lights, video & sound set-up

Break - Technical coordinator's arrival**Set-up supervised by the technical coordinator - 5 hours**

Scenography set-up: light bar + mirror ball
Company control set-up
Point the lights
Light cues check.

Stage manager's arrival

- **DAY 2 - Minimum 1 sound/light technician and 1 stage technician provided by the venue**

Technical check and rehearsal - 5 hours

Video and sound control set-up
Video check
Video, sound & lights rehearsal

Break - Dancer's arrival**Full rehearsal, performance & set-down - 8 hours**

Spacing
Full rehearsal with all the scenography elements
Cleaning the stage (1 hour before the show)
Opening the doors (15 min before the show)
Show (1 hour)
Set-down (2 hours max.)

During the rehearsals and show the company needs 1 stage technician to manipulate the scenography on the stage and 1 light technician to operate the spotlight. We will clearly explain to them these movements during the technical rehearsal.

The company travels with 2 technicians: One technical coordinator who will control lights and set and one stage manager for the sound and video.

CONTACT

- TECHNICAL COORDINATION

Guillem Gelabert
+34 605 923 230
guigelabert@gmail.com

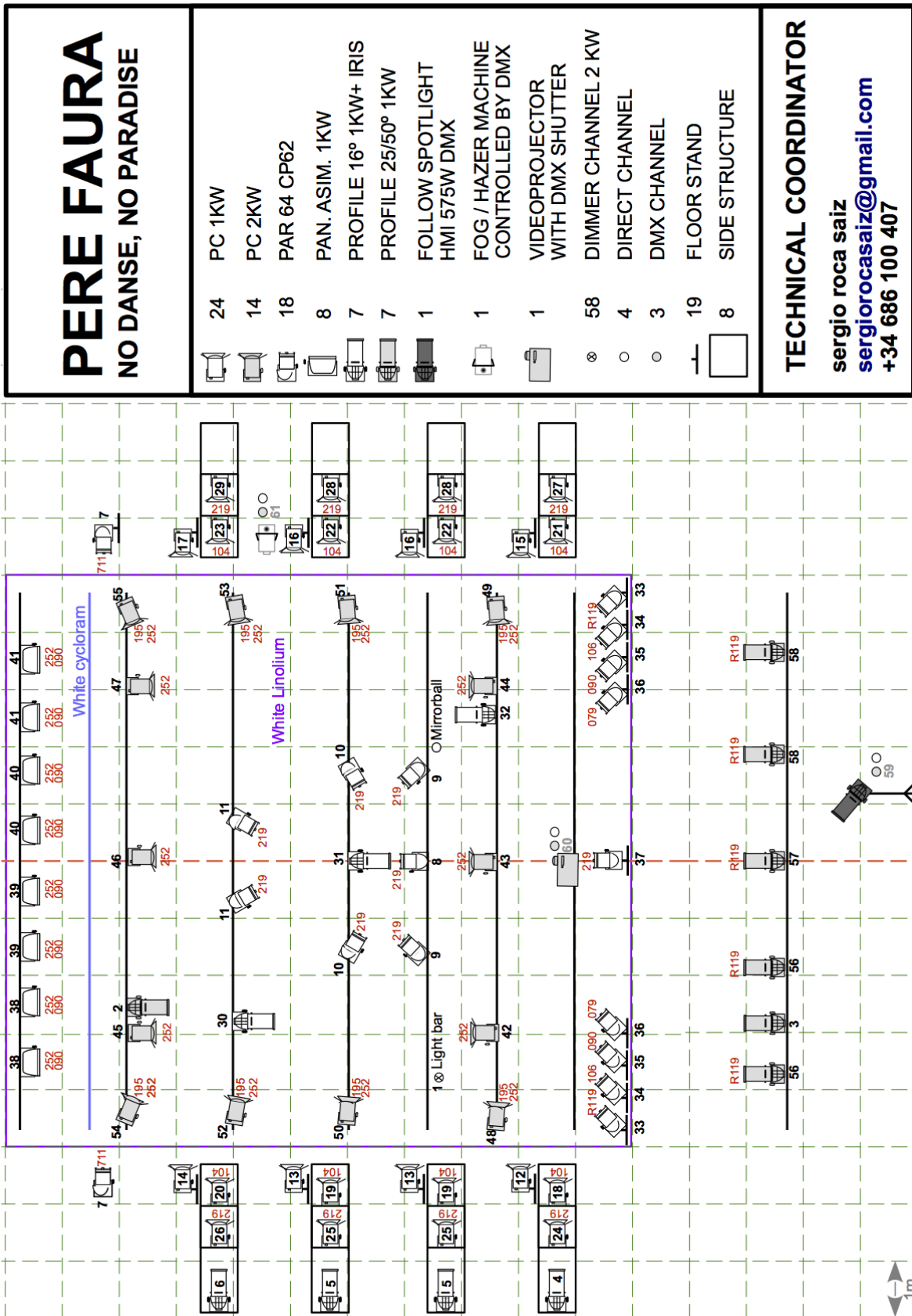
Sergio Roca Saiz
+34 686 10 04 07
sergiorocasaiz@gmail.com

- PRODUCTION MANAGEMENT

Sandra Casals (Blanc Produccions)
+34 609 72 80 01
sandra@blancproduccions.com

ATTACHMENTS

LIGHTING PLOT



FILTER LIST

Filter	PC 1KW	PC 2KW	PAR64	Pan. Asim.	Profile 1KW
Lee 079			2		
Lee 090 HT			2	8	
Lee 104	8				
Lee 106			2		
Lee 195 HT		8			
Lee 219	8		8		
Lee 252		14		8	
Lee 711			2		
Rosco 119				2	5